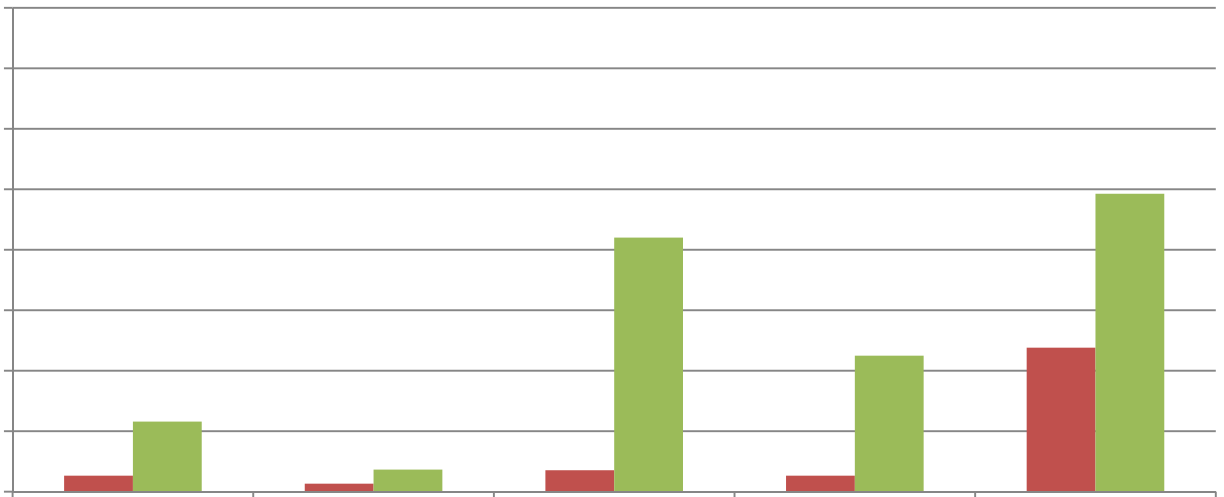
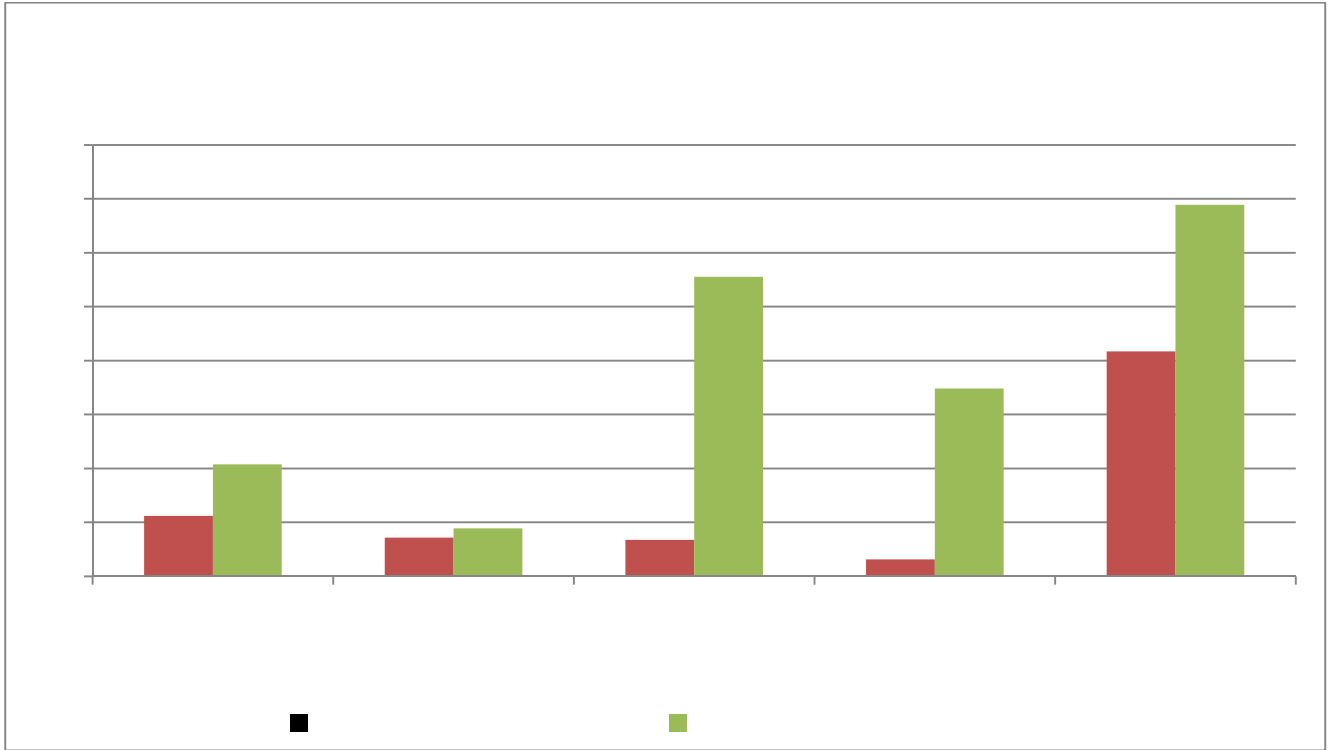
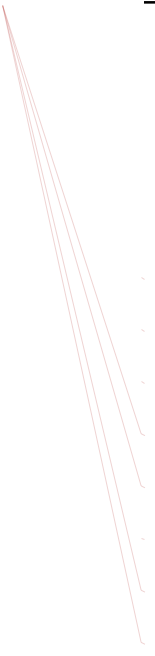
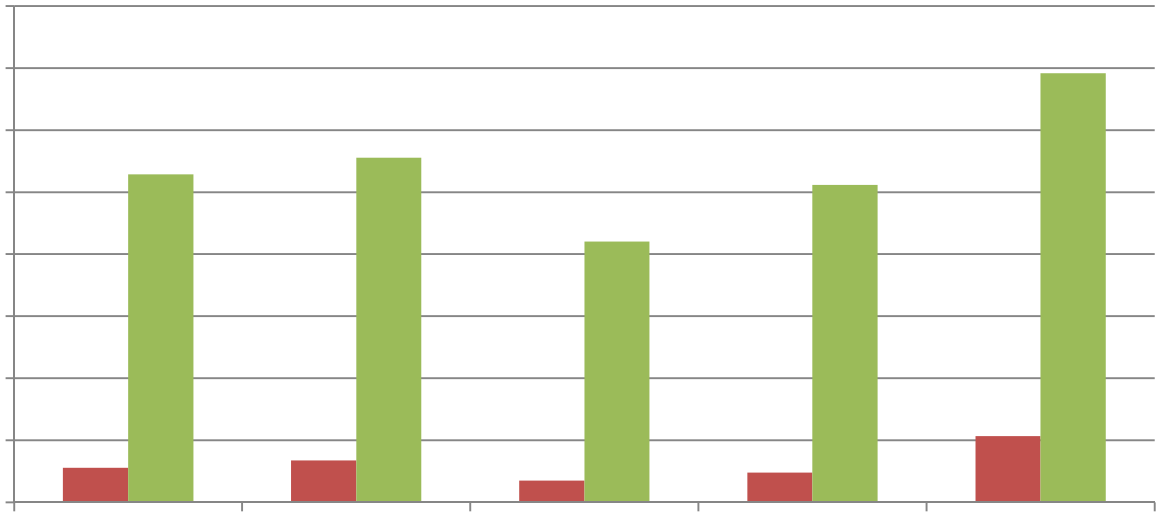


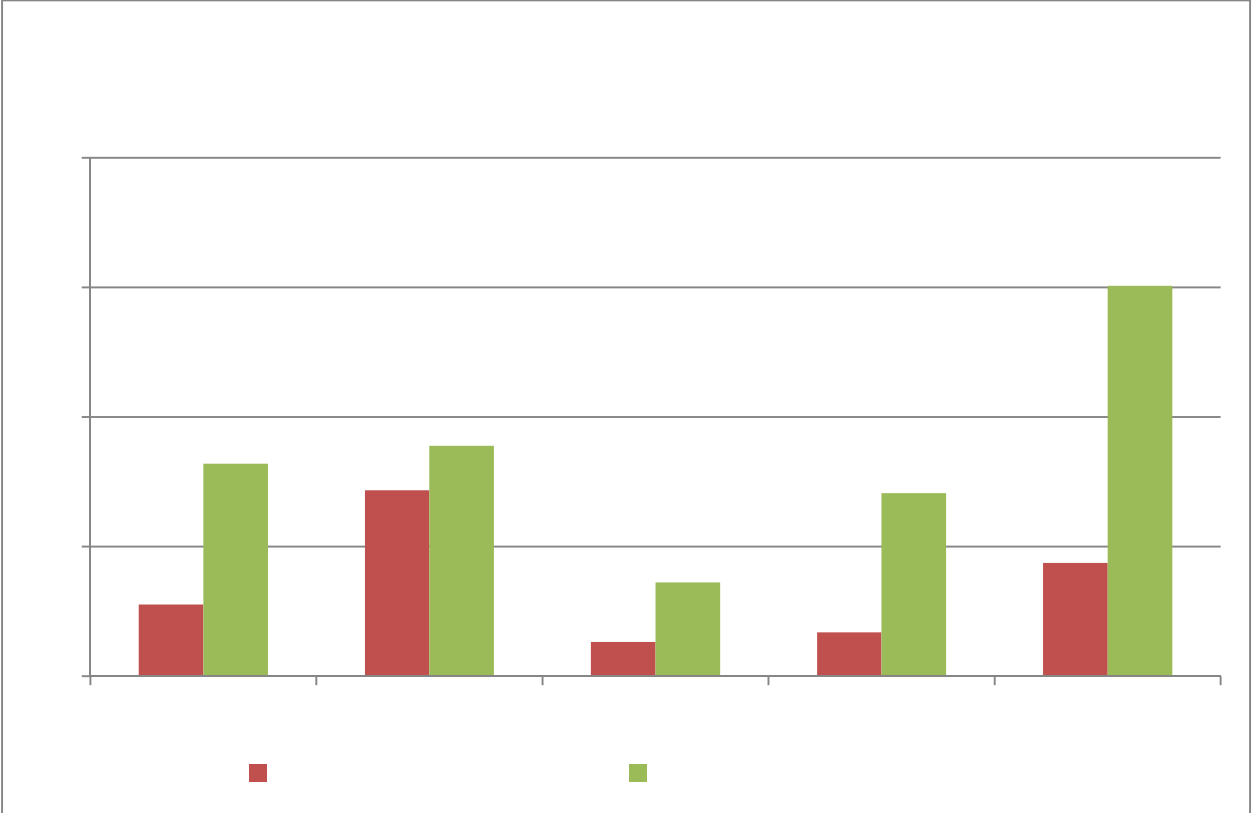
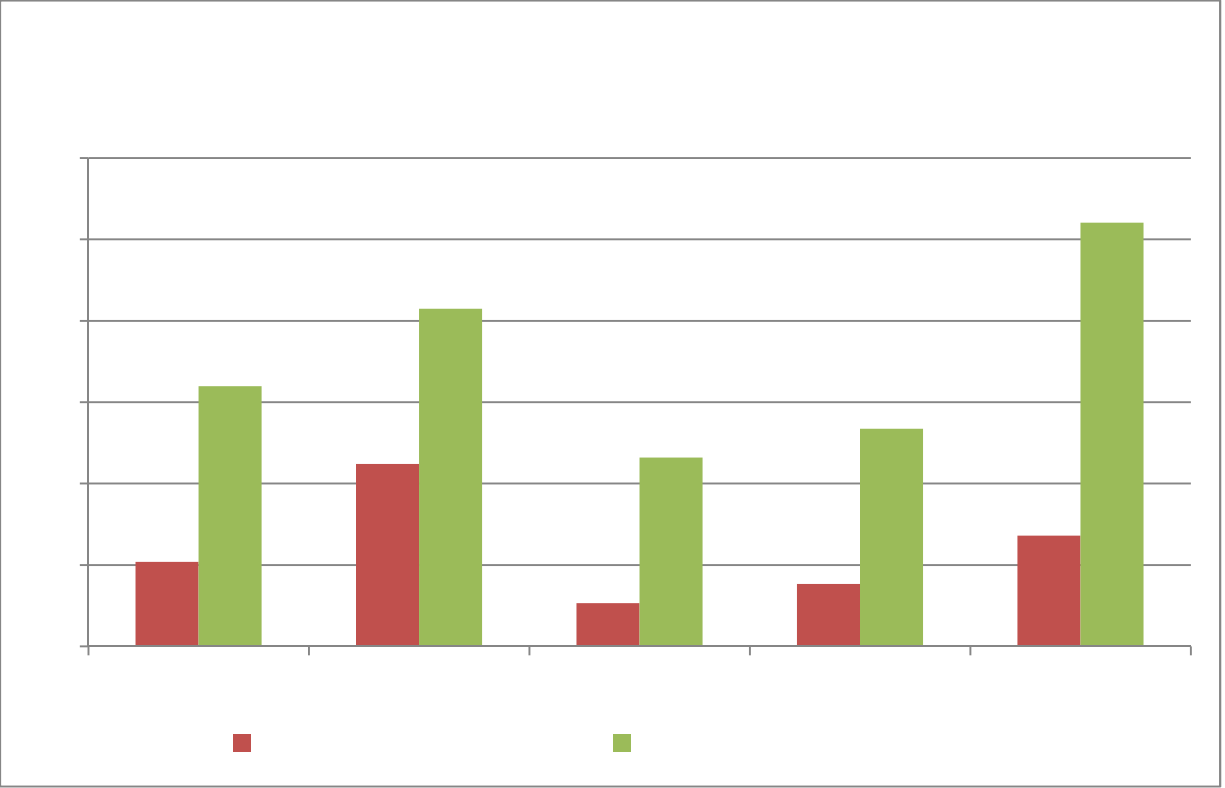
Additionally, the impact of the Promise Pathways on these key early indicators of educational progress have been disaggregated by ethnicity for the major ethnic groups represented in the student population of Long Beach City College (for the entire college in Fall 2012, the ethnic demographic distribution was 48% Hispanic, 17% White, 15% African American, and 14% Asian/Pacific Islander/Filipino, and 6% students of other, unknown, unreported, or multiethnic backgrounds).

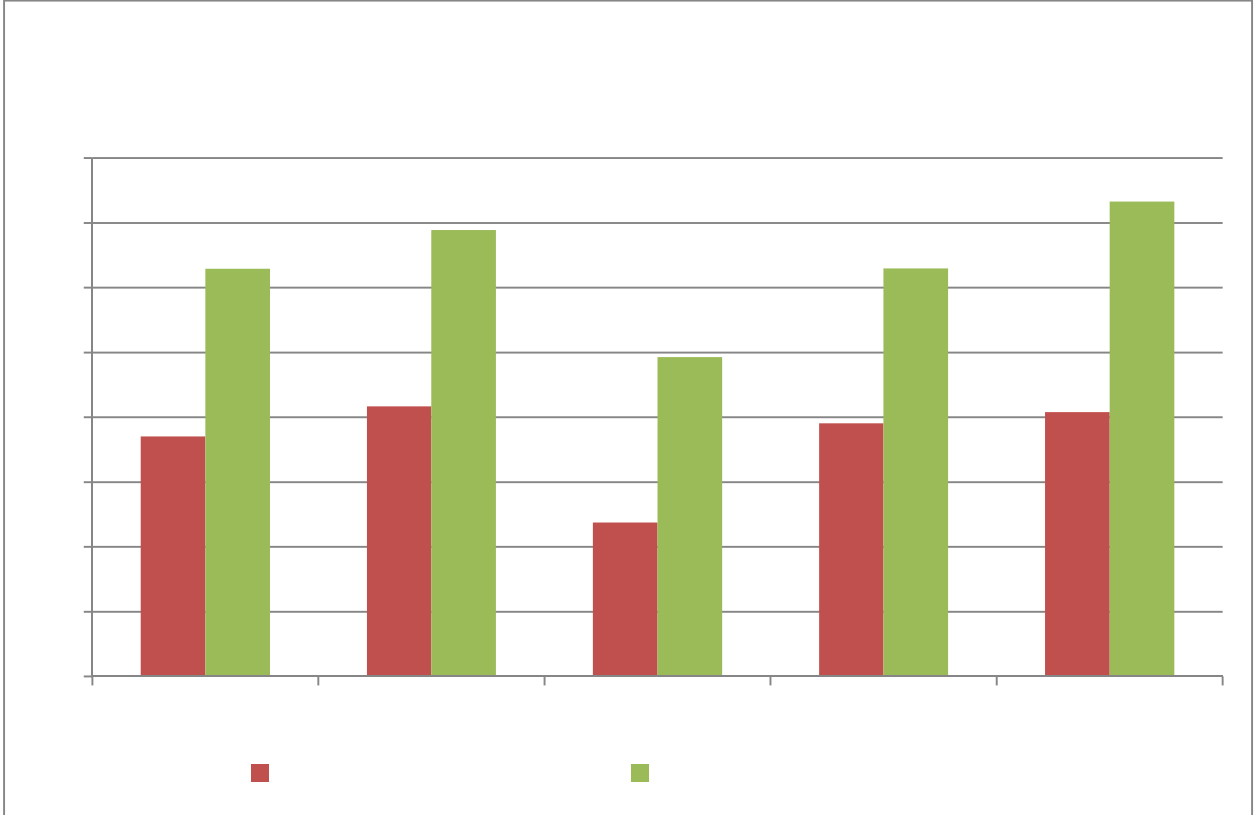
The figures below present the disaggregation of these results in two different ways. Figures 2-5 present the impact of the program on all five early educational milestones above with a separate figure for each of the major ethnic groups. Figures 6-10 present the same results but for the four major ethnic groups with a separate figure for each of five educational milestones. Finally, Table 2 provides the relative improvement in rates of achievement of each of the milestones by student ethnicity. As can be seen below, the first semester of the program has had a consistent and widely shared positive impact across ethnic groups with some of the largest relative gains among students of color at Long Beach City College.











All Students	F2011 LBUSD (n=1660)	Promise Pathways (n = 976)	Relative Improvement
Attempted Transfer Math	5.2%	16.0%	30 %
Successfully Completed Transfer Math	2. %	.2%	2 6%
Attempted Transfer English	5.5%	52. %	54%
Successfully Completed Transfer English	3. %	32. %	64%
Behavioral Intent to Complete	37.1%	62. %	170%

Asian	LBUSD F2011 (n = 223)	Promise Pathways (n = 135)	Relative Improvement
Attempted Transfer Math	11.2%	20.7%	1 5%
Successfully Completed Transfer Math	7.2%	. %	124%
Attempted Transfer English	6.7%	55.6%	26%
Successfully Completed Transfer English	3.1%	34. %	110 %
Behavioral Intent to Complete	41.7%	6 . %	165%

African American	LBUSD F2011 (n = 227)	Promise Pathways (n = 138)	Relative Improvement
Attempted Transfer Math	2.6%	11.6%	43 %
Successfully Completed Transfer Math	1.3%	3.6%	274%
Attempted Transfer English	3.5%	42.0%	11 3%
Successfully Completed Transfer English	2.6%	22.5%	50%
Behavioral Intent to Complete	23. %	4 .3%	207%

Hispanic/Latino	LBUSD F2011 (n = 942)	Promise Pathways (n = 524)	Relative Improvement
Attempted Transfer Math	3. %	13.4%	350%
Successfully Completed Transfer Math	1.7%	7.1%	416%
Attempted Transfer English	4. %	51.1%	1071%
Successfully Completed Transfer English	3.3%	31.1%	45%
Behavioral Intent to Complete	3 .1%	63.0%	161%

White	LBUSD F2011 (n = 206)	Promise Pathways (n = 146)	Relative Improvement
Attempted Transfer Math	6. %	26.0%	3 3%
Successfully Completed Transfer Math	4.4%	15.1%	345%
Attempted Transfer English	10.7%	6 .2%	64 %
Successfully Completed Transfer English	.7%	47. %	54 %
Behavioral Intent to Complete	40. %	73.3%	1 0%